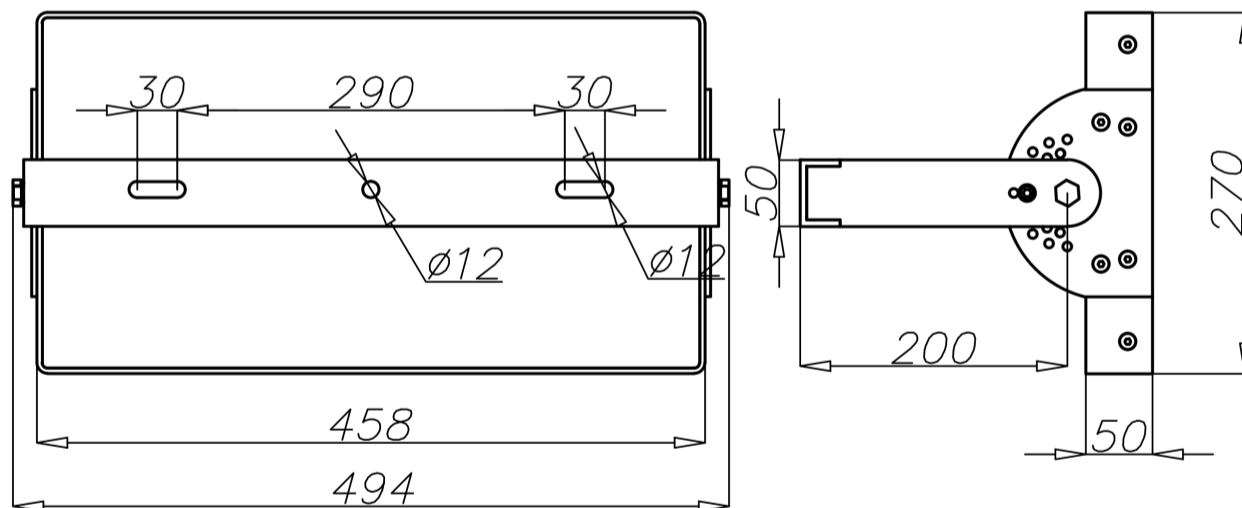
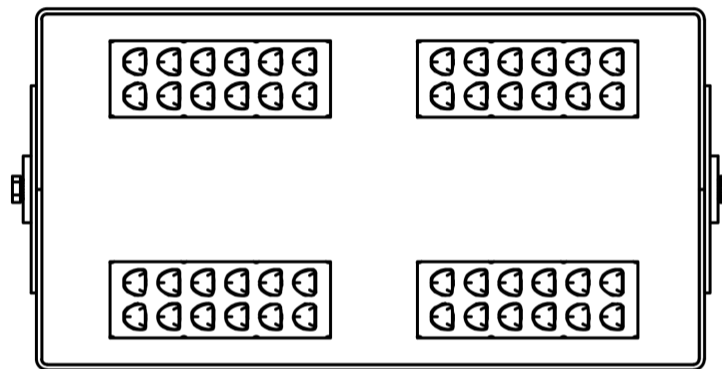
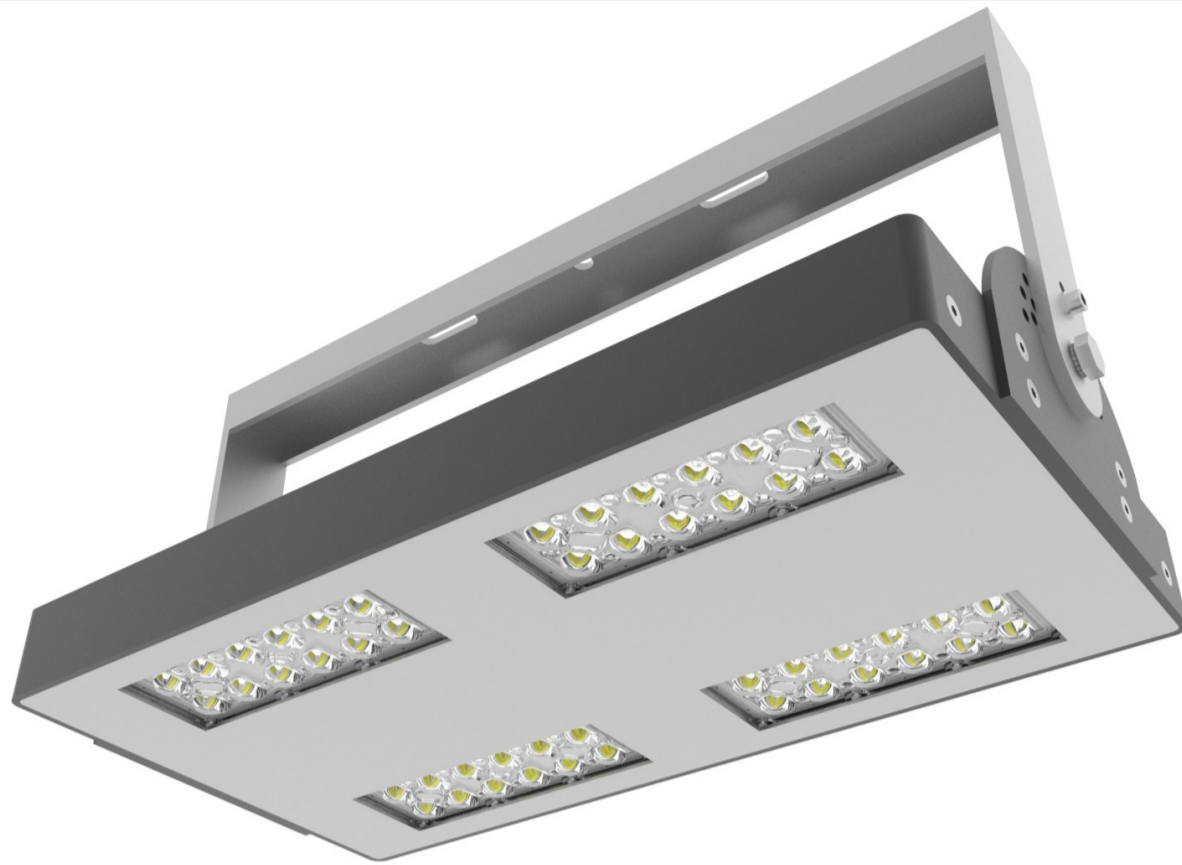




ARTEMIS LED



Characteristic

Ingress protection of optical system and driver	IP 66
Electrical class	II
Nominal input voltage	120 - 277 V AC
Frequency	50/60 Hz
Operating temperatures	-40°C to +40°C
Material	anodized aluminium alloy
Colour	inox / black
Setup	on the extension arm
Tilt angle	0° to 180°, every 10°
Optical system	PMMA lens, replaceable LED module
LEDs type	CREE XM-L2
LEDs lifetime L90	>50 000 h
Warranty	5 years





ARTEMIS LED



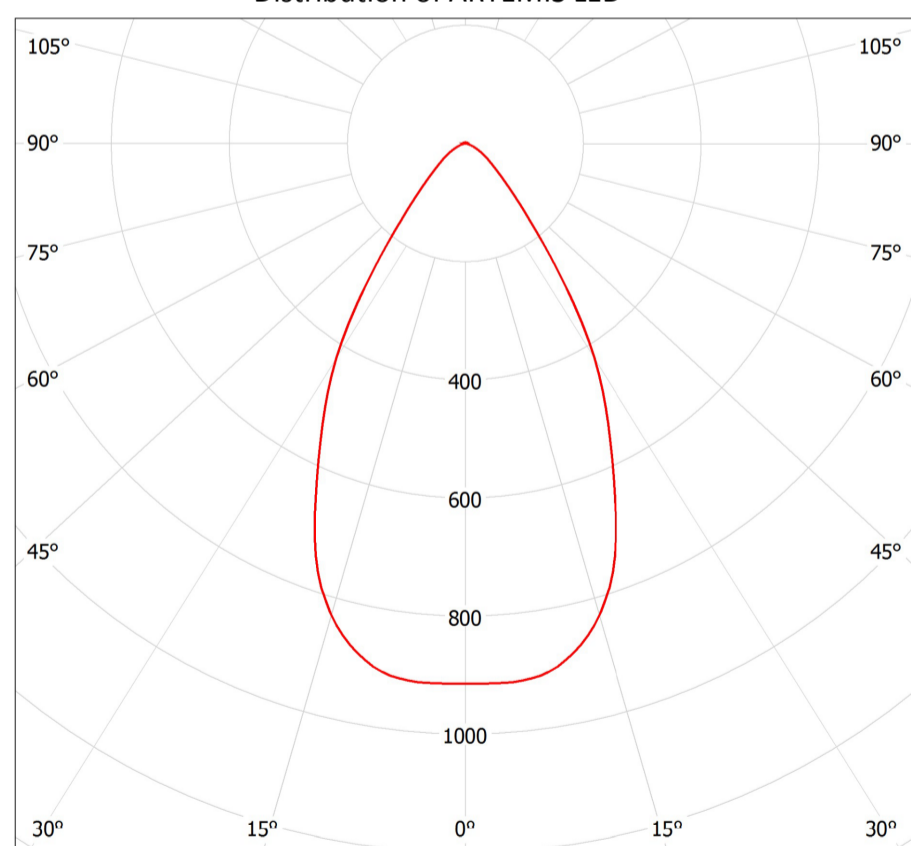
Technical parameters

Type	ARTEMIS LED 144	
Code	229041/6	229041/3
Correlated colour temperature [K]	5 000	3 500
Color rendering index CRI	75 ²⁾	>80
LEDs quantity	48	
Supply current [mA]	1 000	
LEDs power [W]	144	
LEDs luminous flux ¹⁾ [lm]	20 950	17 000
Power consumption [W]	154	
Luminaire luminous flux ¹⁾ [lm]	19 600	15 900
Luminaire efficacy [lm/W]	127	103
Weight [kg]	11	
Volume [m ³]	0,022	
Windage [m ²]	Depending on angular settings (0° - 0,08; 30° - 0,12)	

- 1) including LEDs tolerance parameter accuracy +/- 3%
2) parameter accuracy +/-2

- Low voltage directive LVD 2006/95/WE, norm PN-EN 60598-1, PN-EN 60598-2-3
- Directive EMC 2004/108/WE, norms: PN-EN 55015, PN-EN 61547, PN-EN 61000-3-2, PN-EN 61000-3-3
- Shown parameters based on measurements according to IESNA LM 79-08

Distribution of ARTEMIS LED



cd/klm
— C0 - C180